

# The Record

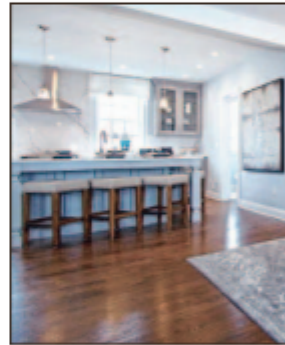
NORTH JERSEY'S TRUSTED SOURCE

Friday, September 21, 2018

## Less than ten homes remain in the first housing phase at East Gate Historic homes remodeled

**A** feverish sales pace has left less than ten homes available in the initial housing phase at East Gate, the unique collection of townhomes, duplexes and single-family residences being created in century-old Officer's Housing buildings on Monmouth County's historic Fort Monmouth.

Since its much-anticipated debut, the popular Jersey Shore neighborhood has enjoyed immediate success with buyers embracing the chance to live in a one-of-a-kind luxury home and a storied and notable residential location. The strong activity recorded from the onset of the sales program has positioned East Gate to fast become an active and lively community when initial closings begin next month.



Kitchen with island at East Gate, Oceanport, NJ.

"We've experienced record-breaking sales velocity since the date we opened the doors to East Gate, and with several significant milestones on the immediate horizon, we expect interest to rise even further during the traditional strong fall selling season," says Michael Hong, assistant vice president of Development at RPM Development Group, the community's developer.

"Most noteworthy is the impending arrival of our first residents, which will begin the transition of East Gate into an established community and put its energetic lifestyle on display. We're confident once visitors see East Gate in full swing, they'll be spurred to act quickly."

East Gate is the first residential component brought to

market in the repositioning of the 1,126-acre former Fort Monmouth U.S. Army post. The community has been quick to differentiate itself thanks to eye-catching architecture and distinctive homes that offer an attractive alternative to the area's conventional housing stock. To create a nostalgic, yet modern living experience at the community, RPM Development has blended the original building exteriors which date back to the early 20th century with contemporary interiors boasting expansive living spaces and designer finishes and appointments.

Palermo Edwards Architecture has remodeled the buildings' interiors to create new two- and three-story homes with luxurious kitchens and bathrooms and a high level of style and comfort. Generous floor plans feature designer elements, including hardwood flooring throughout first floors, modern kitchens with granite or quartz countertops, stainless-steel Kohler fixtures and GE appliance packages; and master-bathroom suites with double vanity

countertops, Moen Eva faucets and showers with built-in benches and frameless shower doors.

Homes are priced from the high-\$400,000s to the mid-\$700,000s. Situated in the sought-after

Borough of Oceanport, East Gate has been designed to offer a classic residential environment with a twist of historic charm. Homeowners enjoy the added benefit of residing in an inviting and established neighborhood where community sidewalks are already complete and mature trees dot the landscape.

The overall Fort Monmouth redevelopment effort will ultimately comprise new housing, office space, retail, entertainment and dining, and recreational and social amenities spread across three municipalities.

"There's a wealth of leisure-time activities within the grounds of Fort Monmouth, including waterfront dining, picturesque nature trails and scenic common outdoor spaces," Hong points out. "The Fort Athletic Club, a state-of-the-art fitness and wellness facility, is expected to open this fall and future site plans call for other

exciting new amenities and services such as a bowling center and microbrewery."

Oceanport is one of Monmouth County's most desired residential settings, combining a distinctly suburban environment with award-winning schools. The borough also provides a commuter-friendly location with access to all that makes Jersey Shore living desirable.

East Gate itself is situated just minutes from popular New Jersey beaches and the banks of the Shrewsbury River, and is in proximity to the entertainment, dining and culture of Red Bank and Asbury Park.

For additional information, call 732-523-5566 or visit [www.EastGateOceanport.com](http://www.EastGateOceanport.com).

The on-site sales program is being conducted by CB New Homes of Florham Park, NJ. The community's sales and model complex is located at 33 Russel Avenue, Oceanport, NJ.



PHOTO COURTESY OF RPM DEVELOPMENT

**Fort Monmouth, the former U.S. Army post, and its officers' homes have been transformed into the East Gate residential community.**